

P2RY6 Antibody (C-term)
Affinity Purified Rabbit Polyclonal Antibody (Pab)
Catalog # AP16054b

Specification

P2RY6 Antibody (C-term) - Product Information

Application	WB,E
Primary Accession	Q15077
Other Accession	NP_789768.1 , NP_789767.1 , NP_004145.1
Reactivity	Human
Host	Rabbit
Clonality	Polyclonal
Isotype	Rabbit IgG
Calculated MW	36429
Antigen Region	286-314

P2RY6 Antibody (C-term) - Additional Information

Gene ID 5031

Other Names

P2Y purinoceptor 6, P2Y6, P2RY6

Target/Specificity

This P2RY6 antibody is generated from rabbits immunized with a KLH conjugated synthetic peptide between 286-314 amino acids from the C-terminal region of human P2RY6.

Dilution

WB~~1:1000

E~~Use at an assay dependent concentration.

Format

Purified polyclonal antibody supplied in PBS with 0.09% (W/V) sodium azide. This antibody is purified through a protein A column, followed by peptide affinity purification.

Storage

Maintain refrigerated at 2-8°C for up to 2 weeks. For long term storage store at -20°C in small aliquots to prevent freeze-thaw cycles.

Precautions

P2RY6 Antibody (C-term) is for research use only and not for use in diagnostic or therapeutic procedures.

P2RY6 Antibody (C-term) - Protein Information

Name P2RY6

Function Receptor for extracellular UDP > UTP > ATP. The activity of this receptor is mediated by

G proteins which activate a phosphatidylinositol-calcium second messenger system.

Cellular Location

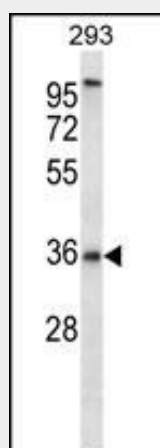
Cell membrane; Multi-pass membrane protein.

P2RY6 Antibody (C-term) - Protocols

Provided below are standard protocols that you may find useful for product applications.

- [Western Blot](#)
- [Blocking Peptides](#)
- [Dot Blot](#)
- [Immunohistochemistry](#)
- [Immunofluorescence](#)
- [Immunoprecipitation](#)
- [Flow Cytometry](#)
- [Cell Culture](#)

P2RY6 Antibody (C-term) - Images



P2RY6 Antibody (C-term) (Cat. #AP16054b) western blot analysis in 293 cell line lysates (35ug/lane). This demonstrates the P2RY6 antibody detected the P2RY6 protein (arrow).

P2RY6 Antibody (C-term) - Background

The product of this gene belongs to the family of G-protein coupled receptors. This family has several receptor subtypes with different pharmacological selectivity, which overlaps in some cases, for various adenosine and uridine nucleotides. This receptor is responsive to UDP, partially responsive to UTP and ADP, and not responsive to ATP. Four transcript variants encoding the same isoform have been identified for this gene. [provided by RefSeq].

P2RY6 Antibody (C-term) - References

Rose, J.E., et al. Mol. Med. 16 (7-8), 247-253 (2010) :
Ben Yebdri, F., et al. Eur. J. Immunol. 39(10):2885-2894(2009)
Wong, A.M., et al. Am. J. Respir. Cell Mol. Biol. 40(6):733-745(2009)
Jiang, Y., et al. J. Immunol. 182(2):1129-1137(2009)

Nishida, M., et al. EMBO J. 27(23):3104-3115(2008)